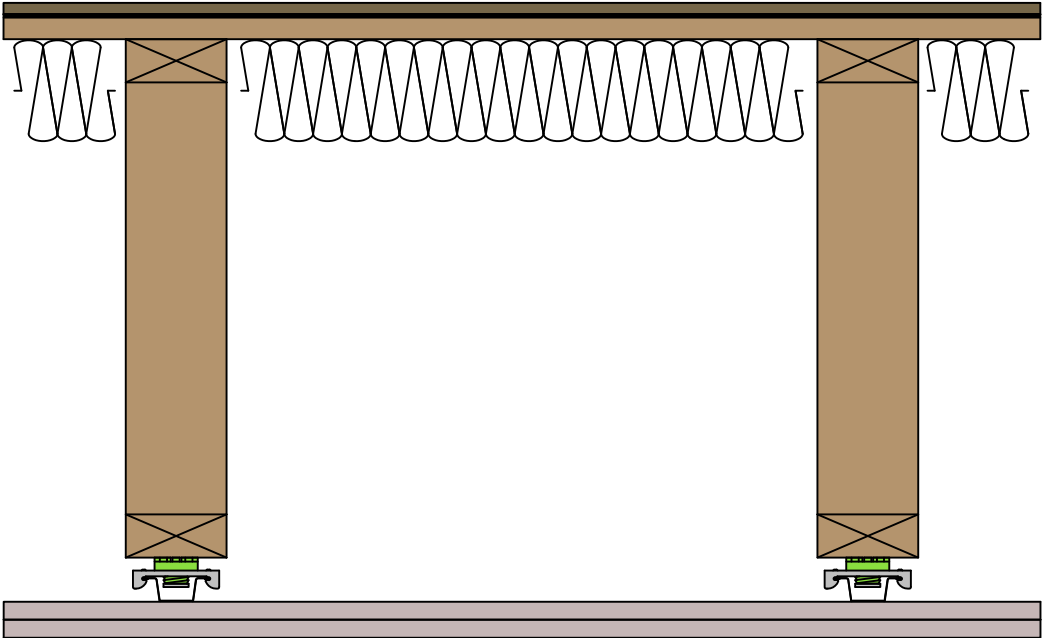


STC
60

IIC
55

Assembly

- Bamboo Flooring, 3/8" (10mm)
- Sonus Core 3, 1/8" (3mm)
- OSB, 3/4" (19mm)
- Open Web Truss, 18" (457mm)
- SonusClip Ceiling



Contact

REGUPOL America LLC
11 Ritter Way
Lebanon, Pennsylvania 17042
UNITED STATES OF AMERICA
www.regupol.com

Notes

Adjacent trades are only shown schematically and in parts. The applicability and other conditions or constraints need to be checked by the customer of user on their own responsibility. The technical data sheets, installation instructions and local conditions need to be considered.

Acoustical Test Assembly

Test Report no.: H6848.02-303-11-R0

Test Report no.:

Drawn by: DLG

Test Date: 11.15.2017

Scale: N/A

DWG no.: 1