

# TECHNICAL DATA

## REGUPOL SONUS CURVE 15



### Product

High performance impact and airborne sound insulating underlayment for various floor structures under screed beds and floating floors.



### Material

- PUR-bonded recycled rubber fibres
- Dimpled profile on the underside

### Weight

6.0 kg/m<sup>2</sup>

### Dimensions

Length: 15,000 mm, Width: 1,150 mm, Thickness: 15 mm

### Applications

Under cement or gypsum screed beds, concrete or timber toppings and other floating floor solutions for both residential and commercial use, e. g. cinemas, theatres or mechanical rooms.

### Certification

GreenCircle certified for recycled content and can potentially qualify for up to 8 LEED points.

**Cradle to Cradle Certified®** is a registered trademark of the Cradle to Cradle Products Innovation Institute (C2CPII).



Acoustical Performance*	Standard	Result
Under concrete:		
100 mm reinforced concrete, <b>REGUPOL sonus curve 15</b> , 140 mm concrete slab	DIN EN ISO 10140-3 DIN EN ISO 717-2 ASTM E492-09 ASTM E989-06	$\Delta L_w \geq 26$ dB IIC 59 ( $\Delta IIC$ 30)
	DIN EN ISO 10140-1 DIN EN ISO 717-1 ASTM E413-10 ASTM E90-09	$R_w$ 64 dB STC 64

\*Assembly from top to bottom

Material properties	Standard	Result
Maximum surface load		50 kN/m <sup>2</sup>
Mean dynamic stiffness value	DIN EN 29052-1	$s'_t \leq 18$ MN/m <sup>3</sup>
Compressibility	DIN EN 12431	$c \leq 1.5$ mm

# TECHNICAL DATA

## REGUPOL SONUS CURVE 15

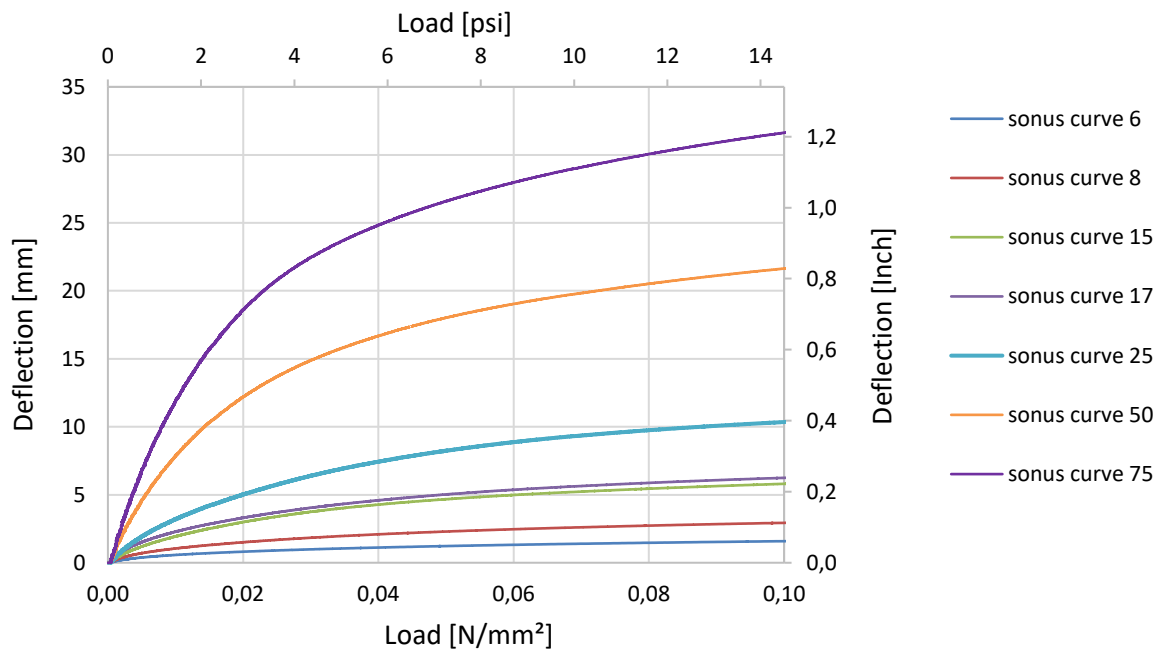


Thermal behaviour	Standard	Result
Thermal conductivity	DIN EN 12667	$\lambda = 0.075 \text{ W}/(\text{mK})$
Thermal resistance	DIN EN 12667	$R = 0.14 \text{ (m}^2\text{K)}/\text{W}$
Temperature resistance		-20 to +60° C

Fire behaviour	Standard	Result
Fire classification	DIN EN 13501-1	E

Health protection	Standard	Result
VOC	DIN EN 16516	compliant with EU-LCI list and German AgBB scheme; "A+" as per décret n°2011-321
Nitrosamine	DIK Method	compliant with German Model Building Regulation
PAH	DIN EN 18287	compliant with German Model Building Regulation

### Physical data - Deflection



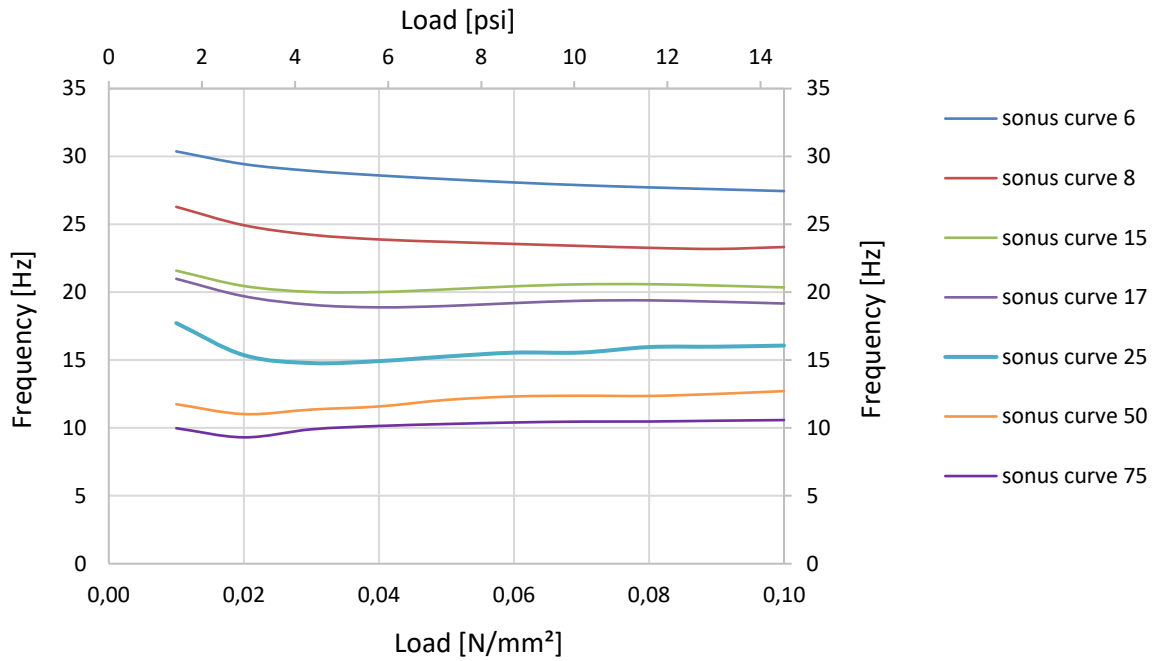
Test results as per test report 07-2019 conducted by Technical University of Dresden, Germany

# TECHNICAL DATA

## REGUPOL SONUS CURVE 15

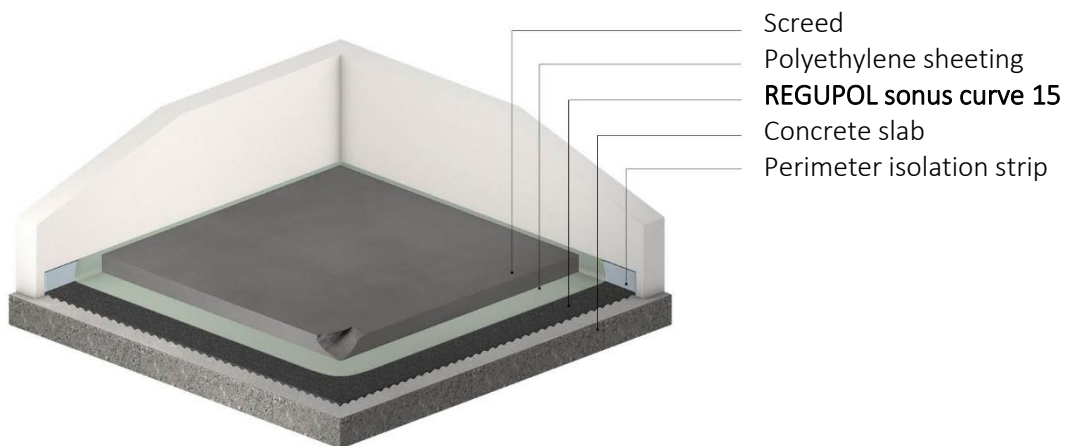


### Physical data – Natural frequency



Test results as per test report 07-2019 conducted by Technical University of Dresden, Germany

### Floor Assembly



For more assemblies and acoustic test reports, please visit [www.regupol.com](http://www.regupol.com).