

# TECHNICAL DATA

## REGUPOL SONUS CURVE 17



### Product

High performance impact and airborne sound insulating underlayment for various floor structures under screed beds and floating floors.

### Material

- PUR-bonded recycled rubber fibres
- Dimpled profile on the underside

### Weight

7.2 kg/m<sup>2</sup>

### Dimensions

Length: 10,000 mm, Width: 1,250 mm, Thickness: 17 mm



### Applications

Under cement or gypsum screed beds, concrete or timber toppings and other floating floor solutions for both residential and commercial use, e. g. cinemas, theatres or mechanical rooms.

### Certification

GreenCircle certified for recycled content and can potentially qualify for up to 8 LEED points.

**Cradle to Cradle Certified®** is a registered trademark of the Cradle to Cradle Products Innovation Institute (C2CPII).

Acoustical Performance*	Standard	Result
Under screed:		
45 mm anhydrite screed, <b>REGUPOL sonus curve 17</b> , 140 mm concrete slab	DIN EN ISO 10140-3	$\Delta L_w \geq 28$ dB
	DIN EN ISO 717-2	
	ASTM E492-09	IIC 64 ( $\Delta$ IIC 29)
	ASTM E989-06	
Under timber:	DIN EN ISO 10140-1	$R_w$ 63 dB
	DIN EN ISO 717-1	
	ASTM E413-10	STC 64
	ASTM E90-09	
Under concrete:		
19 mm T&G timber bonded to 18 mm Yellow Tongue plywood bonded to <b>REGUPOL sonus curve 17</b> , 170 mm concrete slab	ISO 10140-3	$L_{n,w} = 53$ dB
	ISO 717-2	$\Delta L_w = 27$ dB
	(Indicative results only)	
	ASTM E492-09	IIC 55
38 mm concrete topping, <b>REGUPOL sonus curve 17</b> , OSB raft system with sand on 131 mm CLT ceiling	ASTM E989-06	
	ASTM E413-10	IIC 60
	ASTM E90-09	STC 66

\*Assembly from top to bottom

# TECHNICAL DATA

## REGUPOL SONUS CURVE 17



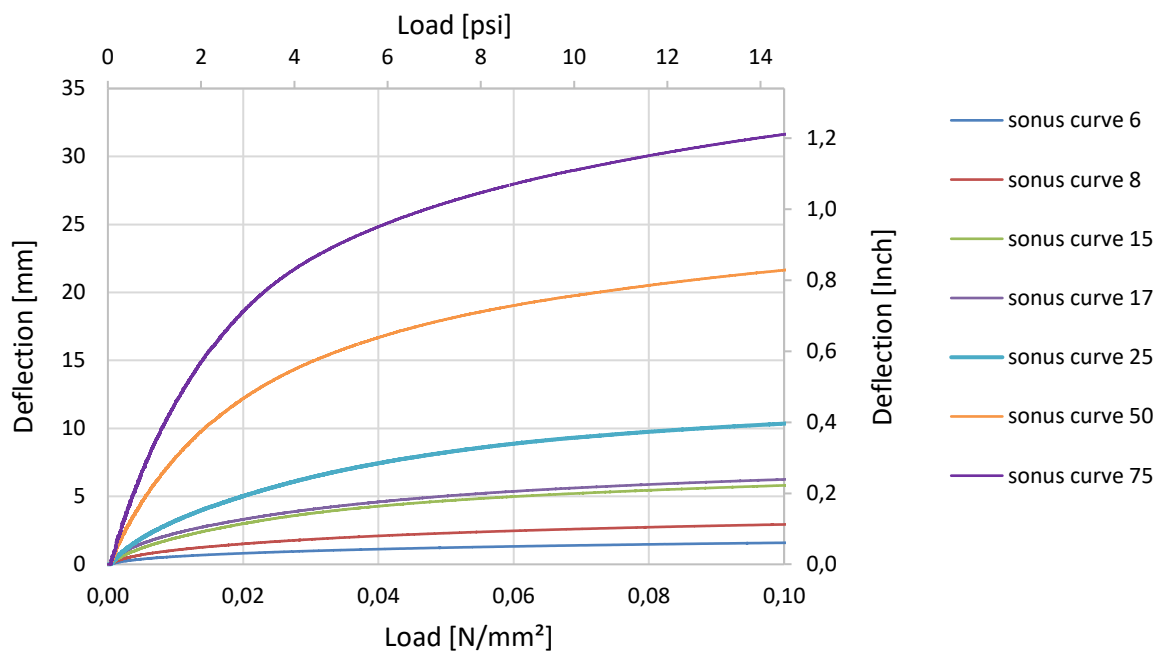
Material properties	Standard	Result
Maximum surface load		50 kN/m <sup>2</sup>
Mean dynamic stiffness value	DIN EN 29052-1	$s'_t \leq 15 \text{ MN/m}^3$
Compressibility	DIN EN 12431	$c \leq 2 \text{ mm}$

Thermal behaviour	Standard	Result
Thermal conductivity	DIN EN 12667	$\lambda = 0.075 \text{ W/(mK)}$
Thermal resistance	DIN EN 12667	$R = 0.167 \text{ (m}^2\text{K)/W}$
Temperature resistance		-20 to +60° C

Fire behaviour	Standard	Result
Fire classification	DIN EN 13501-1	E

Health protection	Standard	Result
VOC	DIN EN 16516	compliant with EU-LCI list and German AgBB scheme; "A+" as per décret n°2011-321
Nitrosamine	DIK Method	compliant with German Model Building Regulation
PAH	DIN EN 18287	compliant with German Model Building Regulation

### Physical data - Deflection



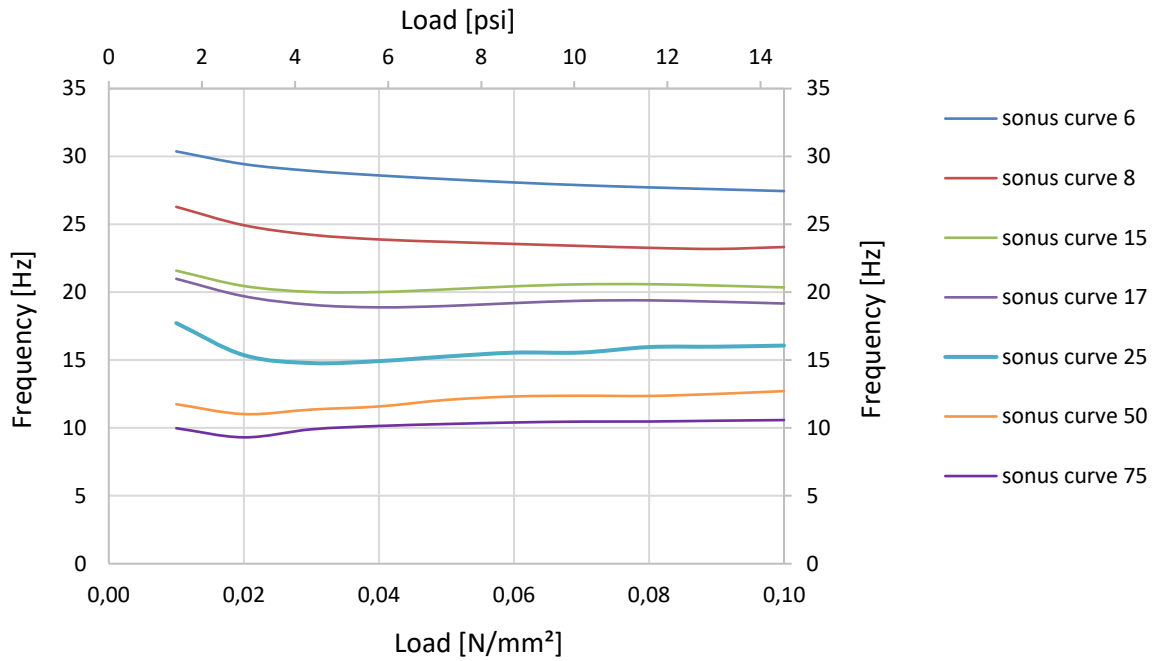
Test results as per test report 07-2019 conducted by Technical University of Dresden, Germany

# TECHNICAL DATA

## REGUPOL SONUS CURVE 17

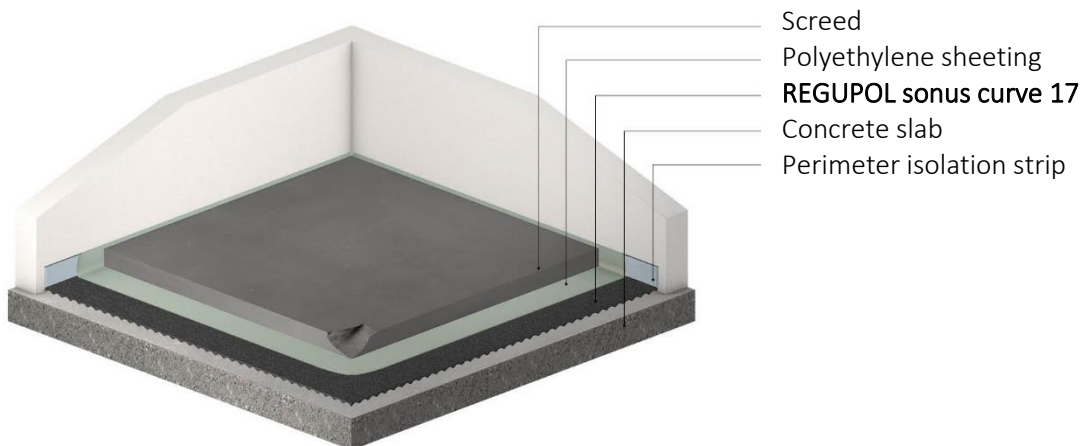


### Physical data – Natural frequency



Test results as per test report 07-2019 conducted by Technical University of Dresden, Germany

### Floor Assembly



For more assemblies and acoustic test reports, please visit [www.regupol.com](http://www.regupol.com).