

# INSTALLATION GUIDELINE **REGUPOL INODIS**



# INSTALLATION GUIDELINE

## REGUPOL INODIS



### PREPARATION



Smooth and levelling...



... Clean and free of dust surface.

### STEP 1: COLUMNS



Mark the position for middle strip at columns.



Glue the middle strip **REGUPOL INODIS vertical**.



Loosely attach the outer strip **REGUPOL INODIS vertical**.



Fix the **REGUPOL INODIS vertical** with a tape.

# INSTALLATION GUIDELINE

## REGUPOL INODIS



### STEP 2: BOTTOM/TOP



Apply thin layer mortar to the fleece of the middle strip **REGUPOL INODIS horizontal** ...



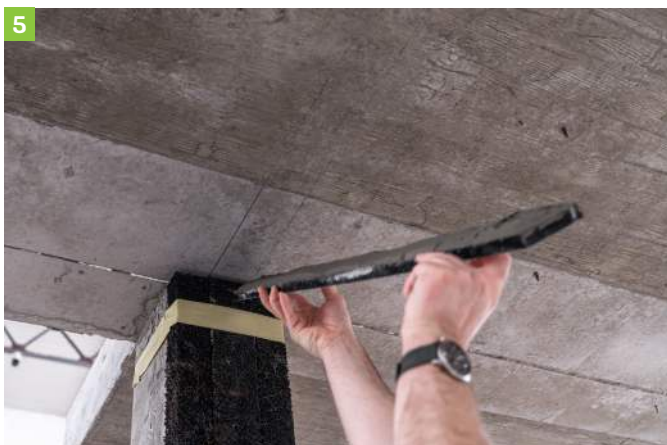
... and place the strip to the concrete bottom beam (silver side upwards).



Place the sliding profiles on the middle strip **REGUPOL INODIS horizontal**.



Place the outer strips **REGUPOL INODIS horizontal** on the sliding profile with fleece facing upwards.



Apply thin layer mortar to the fleece of the middle strip **REGUPOL INODIS horizontal** and place the strip to the concrete surface at the top (silver side downwards).



Instead of using mortar, **REGUPOL INODIS horizontal** can be attached to the concrete by nailing or screwing.

# INSTALLATION GUIDELINE

## REGUPOL INODIS



### STEP 3: BRICK UP



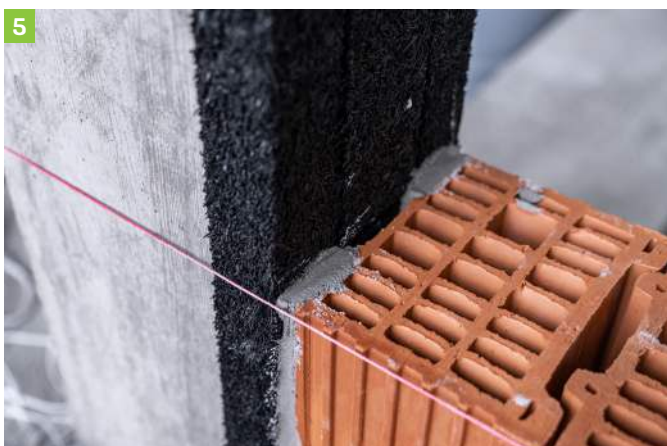
Apply thin layer mortar on the outer strip **REGUPOL INODIS vertical** and **REGUPOL INODIS horizontal**.



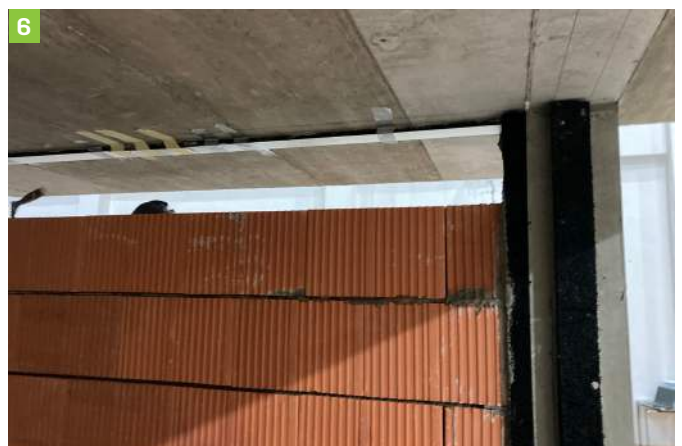
Place the corner brick in the corner and press it into the mortar layer to ensure a proper bonding.



Place brick by brick on the **REGUPOL INODIS horizontal** and continue brick-up to the last row using an approved standard or thin-layer mortar.



Step by step installation of **REGUPOL INODIS vertical** according to STEP 1 and brick up.



# INSTALLATION GUIDELINE

## REGUPOL INODIS



### STEP 4: TOP



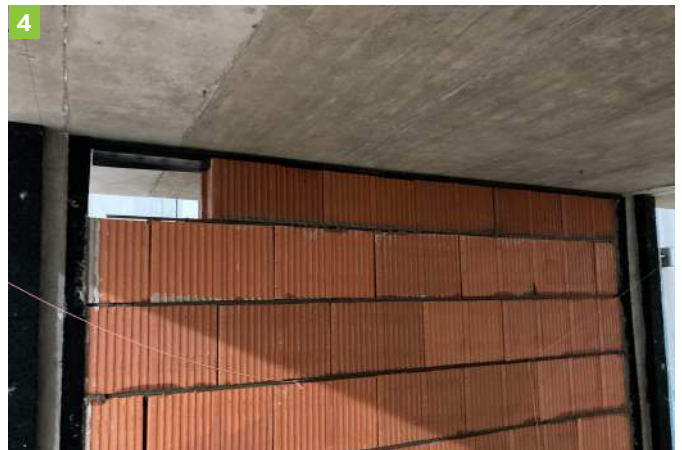
Measure the gap height (brick to concrete) and cut the bricks leaving a gap of approx. 2 cm.



Insert the sliding profiles between the top row of bricks and middle strip **REGUPOL INODIS horizontal**.



Apply thin layer mortar to the fleece of the outer strip **REGUPOL INODIS horizontal** and insert them with the mortar side towards the bricks.



Completion of the last row with sliding surfaces and outer strips of **REGUPOL INODIS horizontal**.



**REGUPOL INODIS** decoupled infill wall. The wall can easily be plastered with joint tapes (mesh fibreglass) covering the rubber joints. Alternatively, wallboards can be applied.

### Contact

If you have any questions or queries, please do not hesitate to contact us.

+49 2751 803-0

acoustics@regupol.eu

# REGUPOL INODIS

A SIMPLE AND SAFE SOLUTION







**REGUPOL Germany GmbH & Co. KG**

Am Hilgenacker 24  
57319 Bad Berleburg  
Tel.: +49 (0)2751 803-0  
info@regupol.de

**REGUPOL America LLC**

**REGUPOL Australia Pty. Ltd.**

**REGUPOL Acoustics Middle East FZE**

**REGUPOL Schweiz AG**

**REGUPOL Zebra Athletics LLC**

**BSW Shanghai CO. LTD.**

[www.regupol.com](http://www.regupol.com)