

TECHNICAL DATA

REGUPOL SONUSFIT T 110



Product

Floor covering made of structure-borne sound insulating elastomers with springy and sports functional properties for use in gyms.

A gym floor is laminated onto the molded part.

REGUPOL sonusfit t 110 can be laid loosely on the raw ceiling or screed.



Material

- Polyurethane bonded rubber fibers
- Top layer: **REGUPOL everroll**

Dimensions and weight

length: 1,000 mm, width: 500 mm, thickness: 45 mm
approx. 14 kg/tile - 28 kg/m²

length: 1.000 mm, width: 500 mm, thickness: 70 mm
approx. 22 kg/tile - 44 kg/m²

Fire classification

C_{fi}-s1*; in Accordance with DIN EN 13501-1

Sports functional properties	Standard	Result
Force reduction	in accordance with DIN EN 14904	59 % (45 mm) 67 % (70 mm)
Sliding behavior ¹	DIN EN 13893	≥ 0,3 μ
Slip Resistance ¹	DIN 51097 / DIN 51130	C / R 10
Light reflectance ¹	DIN EN 13745	between 3,2 - 29,6 %, depending on colour
Abrasion ¹	in accordance with DIN ISO 4649	83 mm ³

*Refers to **REGUPOL everroll ultimate**

¹Refers to **REGUPOL everroll**

TECHNICAL DATA

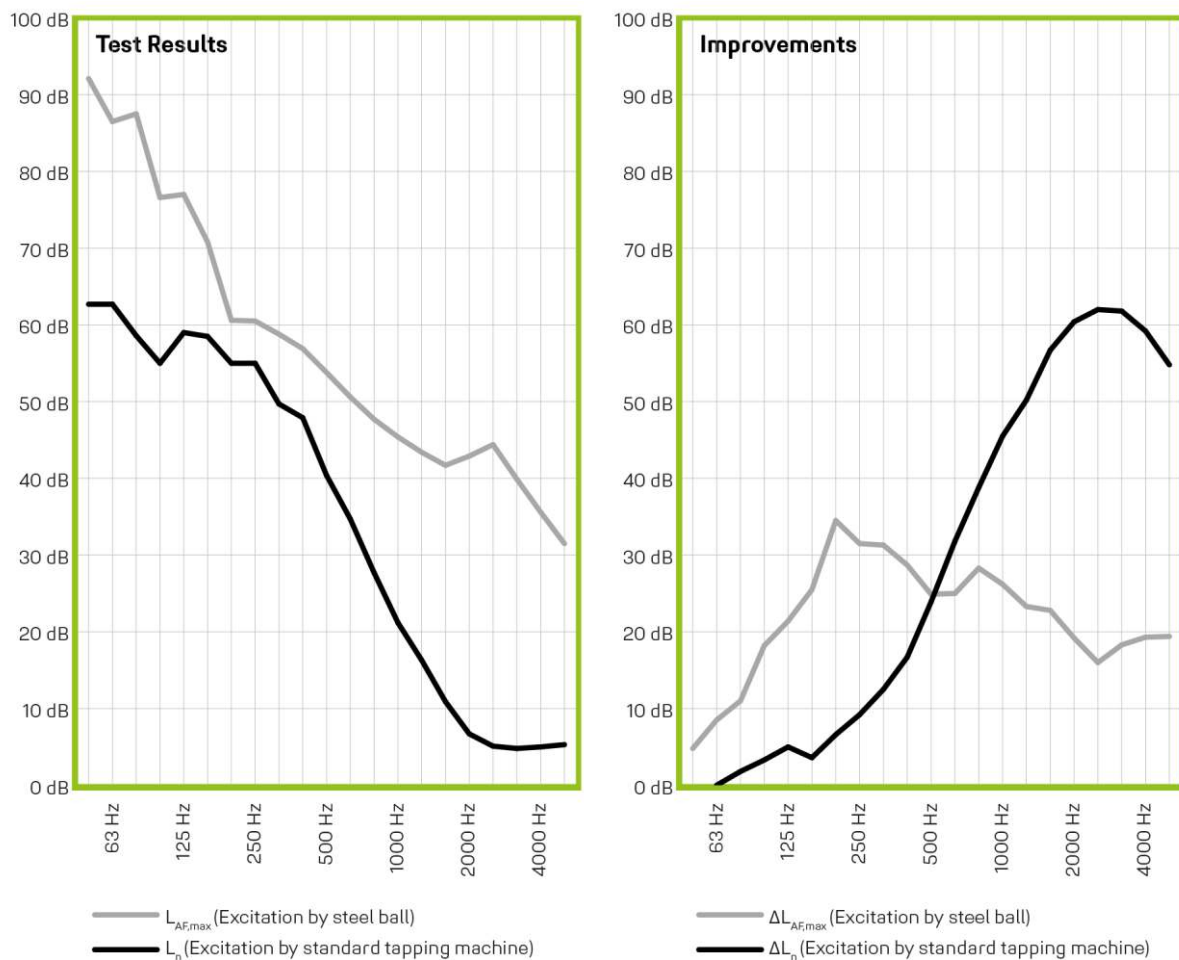
REGUPOL SONUSFIT T 110



Acoustical Performance*	Standard	Result	Comment
45 mm REGUPOL sonusfit t 110, loosely laid on 140 mm concrete slab	DIN EN ISO 10140-3 DIN EN ISO 717-2	ΔL_w 23 dB	Tested by ITA Wiesbaden
45 mm REGUPOL sonusfit t 110, loosely laid on 140 mm concrete slab	Testing under realistic application conditions: 30 kg, 400 mm	$\Delta L_{AF,max}$ 22 dB	Tested by ITA Wiesbaden

*Test setup from top to bottom

Illustrations for the reduction of the impact sound level and maximum sound pressure level



TECHNICAL DATA

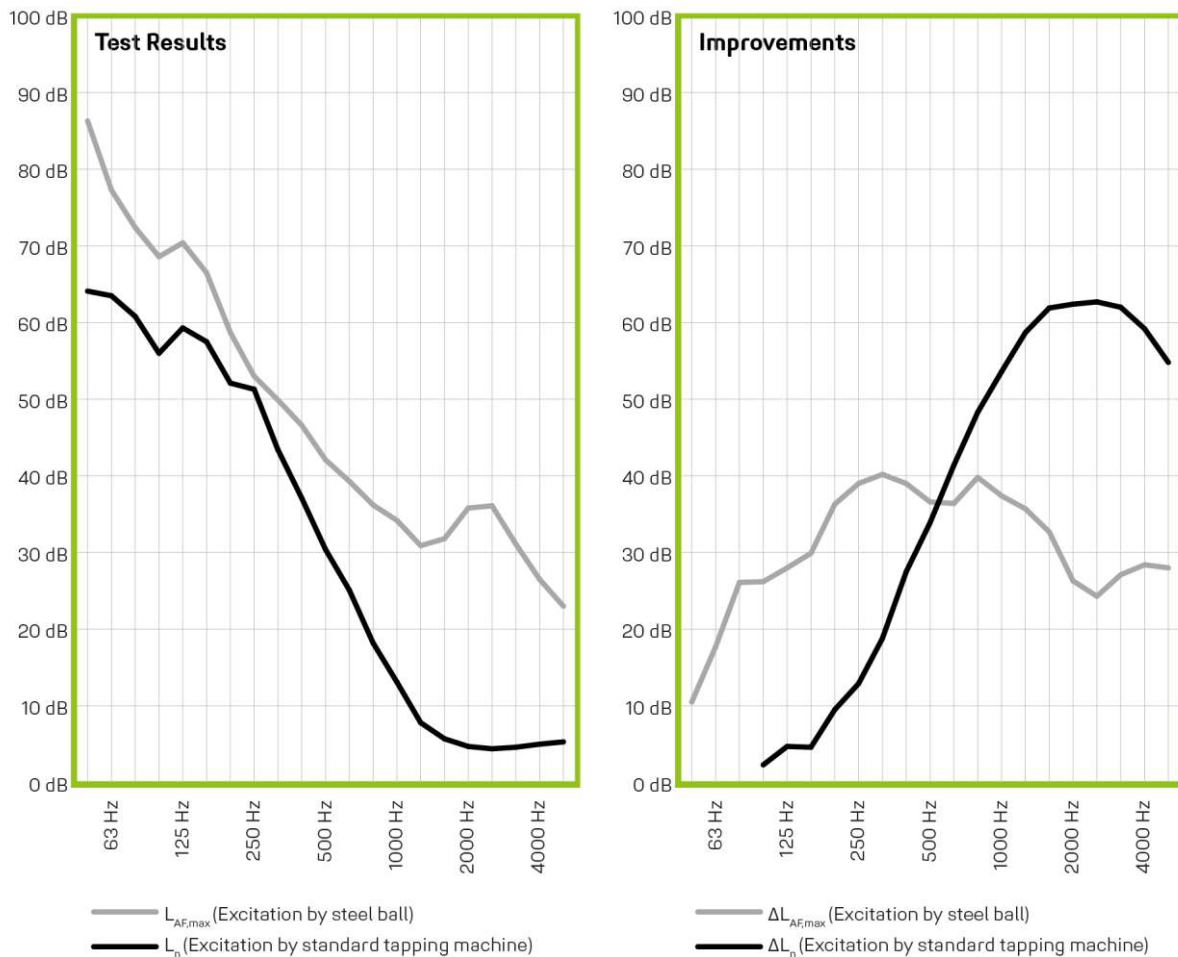
REGUPOL SONUSFIT T 110



Acoustical Performance*	Standard	Ergebnis	Comment
70 mm REGUPOL sonusfit t 110, loosely laid on 140 mm concrete slab	DIN EN ISO 10140-3 DIN EN ISO 717-2	ΔL_w 25 dB	Tested by ITA Wiesbaden
70 mm REGUPOL sonusfit t 110, loosely laid on 140 mm concrete slab	Testing under realistic application conditions: 30 kg, 400 mm	$\Delta L_{AF,max}$ 30 dB	Tested by ITA Wiesbaden

*Test setup from top to bottom

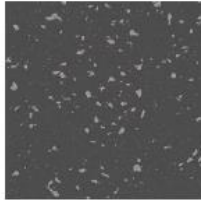
Illustrations for the reduction of the impact sound level and maximum sound pressure level



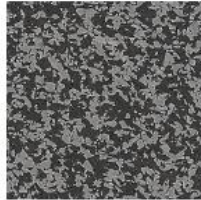
Colours & Decors

REGUPOL everroll ultimate meets the currently valid EU requirements on a consumer product.

EDITION 4.0



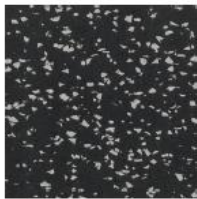
Orleans [1372]



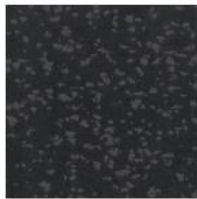
Ottawa [1369]

REGUPOL everroll classic*

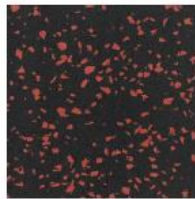
EDITION 4.0



Berlin [3030]



Mons [3256]



Goa [3033]

*Wherever direct, prolonged or repeated skin contact can be expected, the requirements for a Consumer Product currently valid within the EU must be met. Where this is not expected, your choice can be made from the entire decor portfolio. Those products fulfilling the requirements of a "Consumer Product", are explicitly marked as such. Should any questions arise that need clarification, contact your sales representative at our company directly or write to us using the contact form on our website www.regupol.com.

Deviations from the colours shown are possible due to production batches and brochure print.